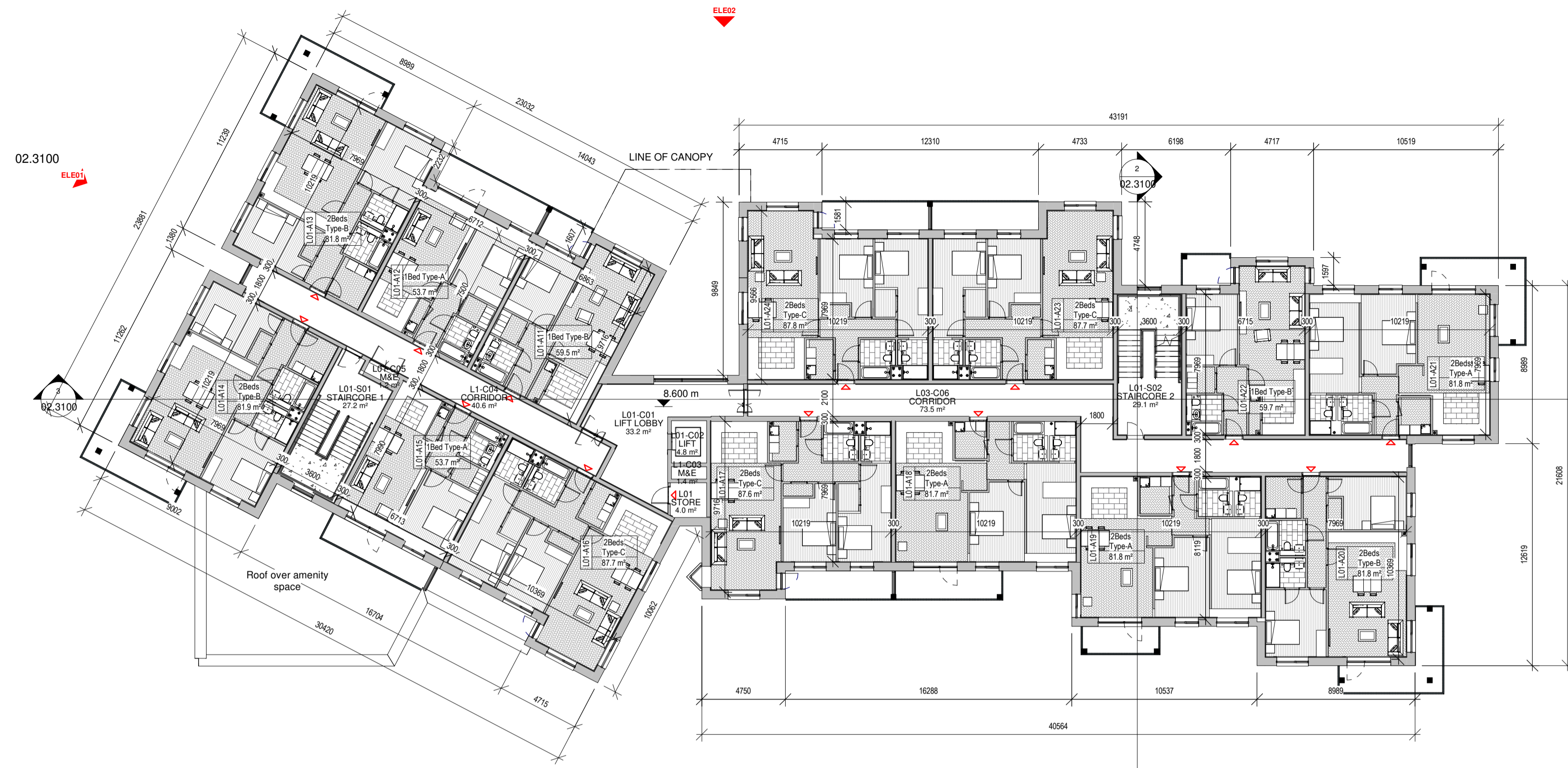
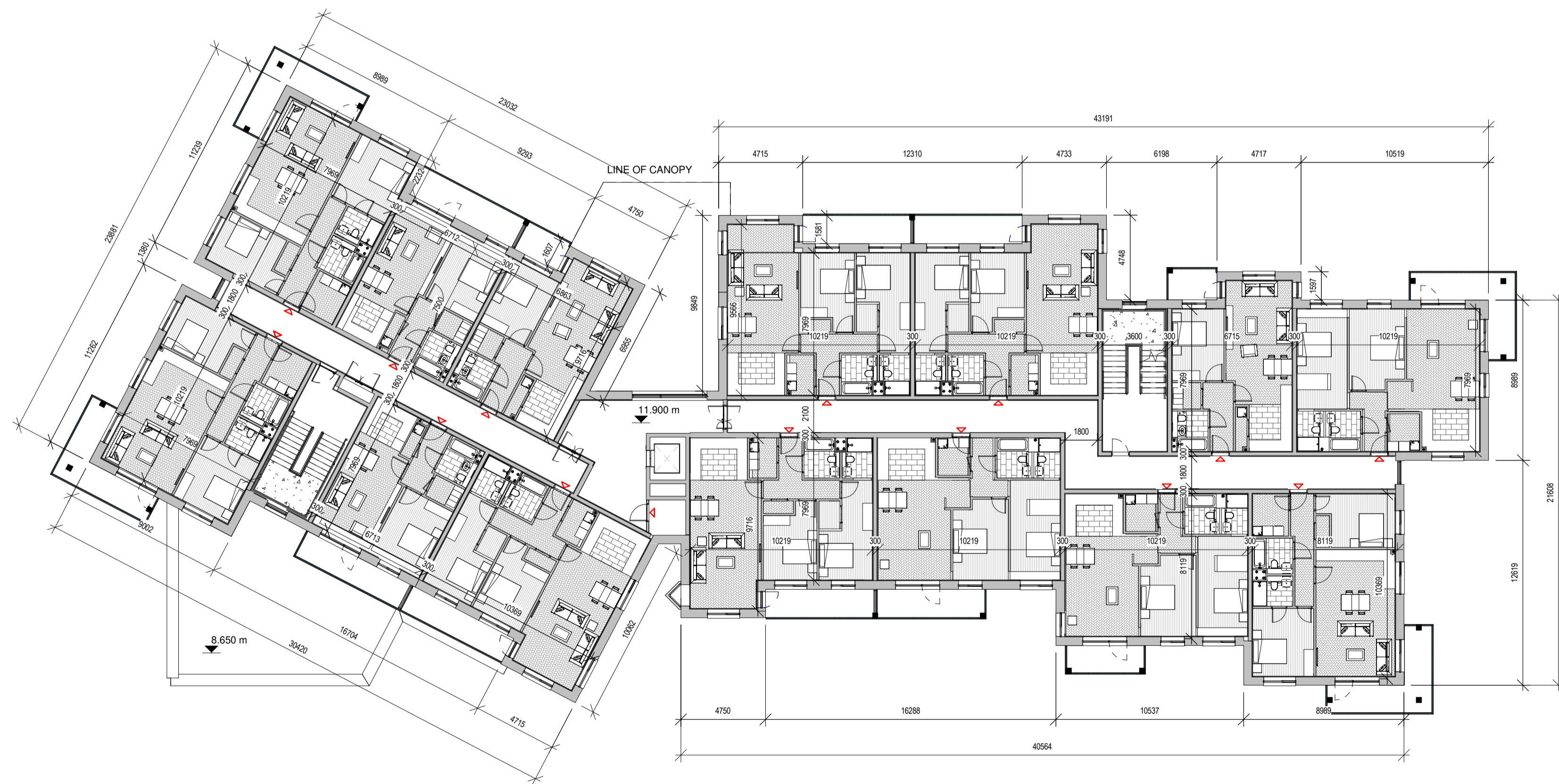


02.3100



1 L01 - First Floor

1 : 200



2 L02 - Second Floor

1 : 200

Notes:

- Do not scale from this drawing. Use figured dimensions in all cases.
- Verify dimensions on site and report any discrepancies to the Architect immediately.
- This drawing is to be read in conjunction with the Architect's Specification.
- © This drawing is copyright and may only be reproduced with the Architect's permission.

Drawing Notes:

Refer to windows, doors and curtain walling schedules for more information on details and types. Refer to all other referenced architectural drawings for more information.  
 Refer also to all other consultants drawings, specifications, reports and schedules including: Walsh Goodfellow for structural and civils, Renaissance for MEP information, JGA for fire strategy information, Ryan & Associates for DAC information, ATT Urbanism & Landscape for landscape plan boundary details & Amplitude Acoustics for Acoustics.

Walls

Selected clay bricks by varying colours as defined in the different character areas as indicated, painted rap sand cement render, exposed plaster bands around external opens / lintels. Concrete or metal cills, lintels or cappings as indicated on elevations.  
 1 Facing Brick 1 - Red / Brown Blend with flush grey mortar  
 2 Facing Brick 2 - Grey brick with recessed dark grey mortar  
 3 Facing Brick 3 - Light Buff brick with recessed grey mortar  
 4 Random rubble stone cladding  
 5 Sand / cement rap finish to external leaf of blockwork, paint then applied.

Windows

6 Windows to be aluminium double glazed windows. External doors to be high security impact resistant timber half doors to EN 1567 and level access threshold to approved colour. obscure windows to bathrooms and where overlooking adjoining amenity spaces as indicated on elevation drawings.

Roof

7 Bulwose flat concrete roof tiles, fixed to timber battens on vapor permeable roofing underlay, on timber / steel roof structure to a suitable roof pitch manufactured in compliance with EN 456:2005.  
 8. Low pitch roofs or canopies to be either Single ply membrane Tropic type membranes or select pressed metal roofing with standing seams.  
 9. Rainwater goods, downpipes etc. to be Aluminium Alloy.  
 10. Balustrades to be painted mild steel uprights.

	<b>WT1</b> Wall Type 1 - Selected dark red brick with grey mortar		<b>WT2</b> Wall Type 2 - Selected black brick with grey mortar		<b>WT3</b> Wall Type 3 - Selected buff brick with grey mortar
	<b>WT4</b> Wall Type 4 - Random rubble stone cladding		<b>WT5</b> Wall Type 5 - Painted render rap finish		<b>WT6</b> Wall Type 6 - Wood panel

Issues & Revisions			
Rev.	Date	Drawn	Details of Issue / Revision
A	SEPT 21	A.R.	Issue for Planning



Dartry Mills,  
Dartry Road  
Dublin 6,  
D06 Y0E3

T: +353 (0)1 498 7000  
W: www.reddyarchitecture.com  
E: info@reddyarchitecture.com

Client Details:  
**Voyage Property Limited,**  
Ashbourne Hall,  
Dock Road,  
Limerick.

Project Details:  
**Greenpark SHD**  
Limerick

Drawing Title: <b>FIRST &amp; SECOND FLOOR PLAN - APARTMENT C</b>			
Job No. <b>P20-133D</b>	Sheet Size: <b>A1</b>	Scale @A1: <b>1:200</b>	
Issue Date: <b>SEPT 21</b>	Drawn By: <b>A.Navarro</b>	Reviewed By: <b>M.Freaney</b>	
Status: <b>S02</b>	Purpose of Issue <b>3.0 Planning Application</b>		
Project-Originator-Zone-Level-Type-Role-Classification-Number <b>20133-RAU-ZZ-ZZ-DR-A-02.3001</b>			Revision <b>A</b>